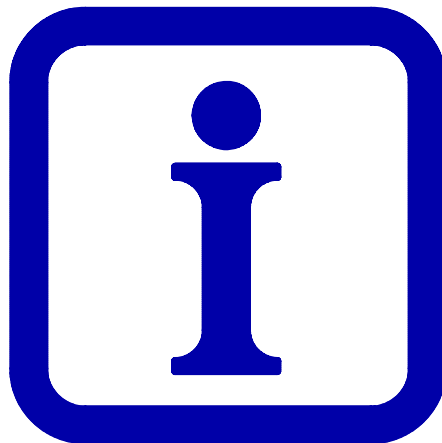


INTRODUCTION



CONTENTS

1. INTRODUCTION.....	2
1.1. AREA OF APPLICATION OF THE OVEN.....	2
1.1.1. working environment.....	3
1.2. PRODUCT TO BE PROCESSED.....	4
1.3. SAFETY.....	5
1.3.1. Use of pictograms.....	5
1.4. WARRANTY TERMS AND CONDITIONS.....	6

1. INTRODUCTION

1.1. AREA OF APPLICATION OF THE OVEN

The oven has been designed in principle for the catering industry. It can be used for a number of heating processes such as:

- pre-frying
- baking
- heating
- drying
- etcetera

If necessary including moisturising.

The design is suitable for a certain group of products which must fulfil established criteria.

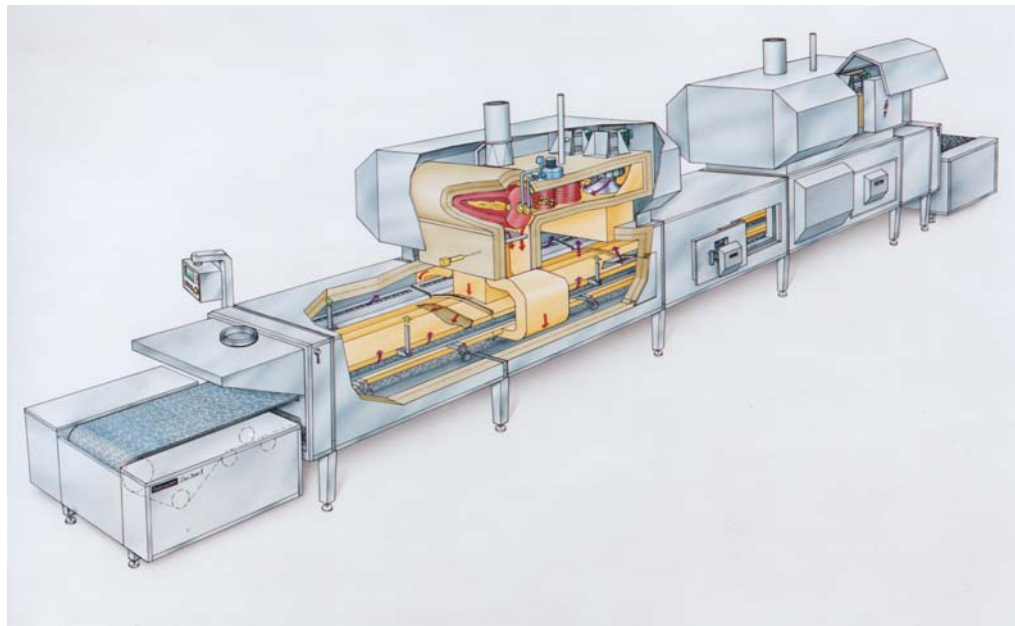


Figure 1.1 General design

The oven works according to the impingement principle.

Heated air is pumped through 'nozzles' at a constant speed and force onto the product to be processed. This air is brought to temperature by a newly-developed heat exchanger and is therefore also free from combustion gases. Dependant on the desired product/air humidity, fresh (ambient) air is mixed in.

An oven consists of at least one zone constructed from a heating-based module and a heating – module.

Connected to this are one or more standard modules and an oven entry and exit.

The oven conveyor runs through the whole formed by the modules (see fig. 1.1).

Due to the method of construction, the oven can be seen as a closed system.

Due to the shape and materials used, the installation is suitable for processing of products intended for the food industry.

The oven has been designed and produced in such a way that it can be viewed an independant unit.

However, it is necessary to supply and discharge the product to be processed. This automisation can if necessary work linked to the oven.

1.1.1. WORKING ENVIRONMENT

The oven has been constructed to the specifications and conditions of the end-user and the product(s) described.

Technical data and technical connection data are listed in chapter 2 (Description).

These data relate to the oven which bears the name plate shown below.

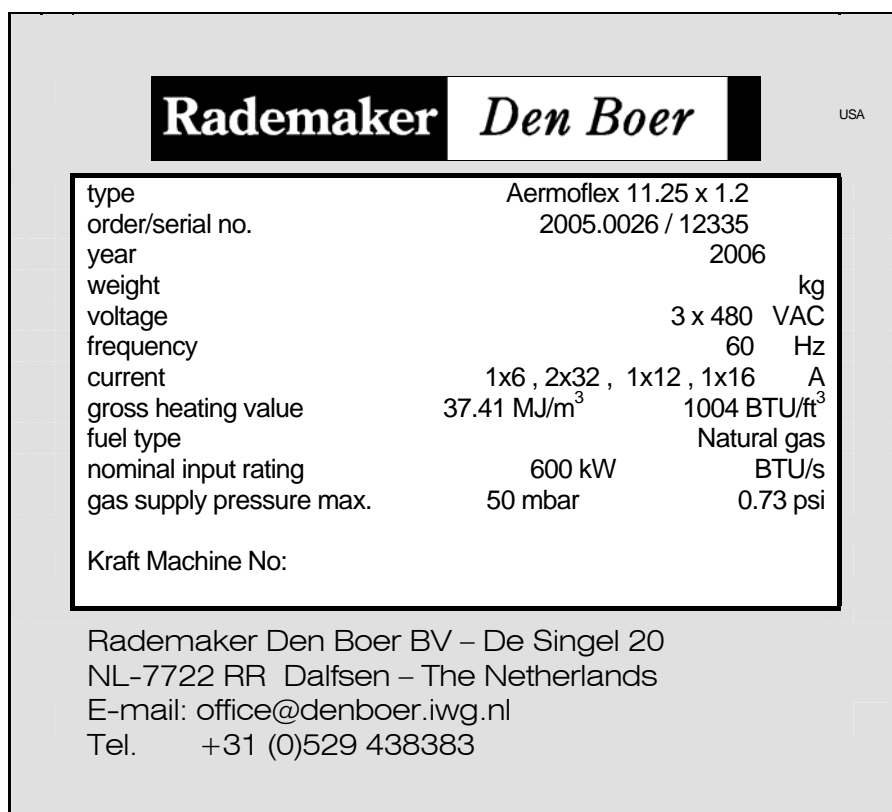


Figure 1.2 Name plate

1.2. PRODUCT TO BE PROCESSED

Product which is processed in/with this oven must, moreover meet certain conditions.

Conditions:

- No product which touches the material
- No powdered product
- No products which may be reduced to powder
- No product not belonging to the conveyor used
- No product not belonging to the trays/plates/sheets/paper used
- Et cetera

1.3. SAFETY

The oven is a machine with rotating and moving parts which could constitute a danger if maintenance and/or inspections are carried out under operating conditions. It is of great importance that the safety precautions and measures are followed to the letter. Work on the oven must never be started before all safety precautions have been taken. When working in places where there is danger of a gas or dust explosion, care must be exercised in following the (locally) applicable regulations.

1.3.1. USE OF PICTOGRAMS

The pictograms shown below are used in the manual to indicate important and/or dangerous situations and to give instructions in this regard.



An operation requiring extra attention.



IMPORTANT

Very important information, instructions and prohibitions concerning the avoidance of damage.



WARNING

A **WARNING** indicates that there is danger of personal injury or serious damage to the product, oven or components if the user does not follow the relevant instructions.

1.4. WARRANTY TERMS AND CONDITIONS

For the Netherlands:

Rademaker Den Boer BV guarantees that the installation is equipped pursuant to the General delivery conditions for the Metal and Electrotechnical Industry dd. 10 December 1996 (FME-CWM).

If indicated, for all other countries:

Rademaker Den Boer BV guarantees that the installation is equipped pursuant to the "General Conditions for the Supply and Erection of Mechanical, Electrical and Associated Electronic Products", Brussels, September 1994.

If work is not carried out in accordance with the provisions, instructions and instructions as described in this manual, damage to the installation may result.

This may mean the guarantee will become invalid.



WARNING

The machines may only be used for the process, environment and specifications of the product for which it has been designed! This is in accordance with the CE Machine guidelines 89/392/EEC, appendix IIA.