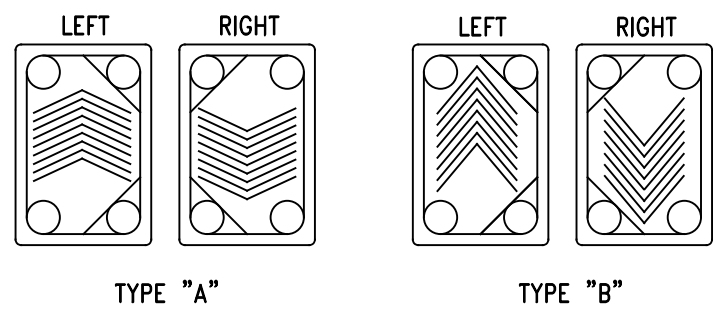
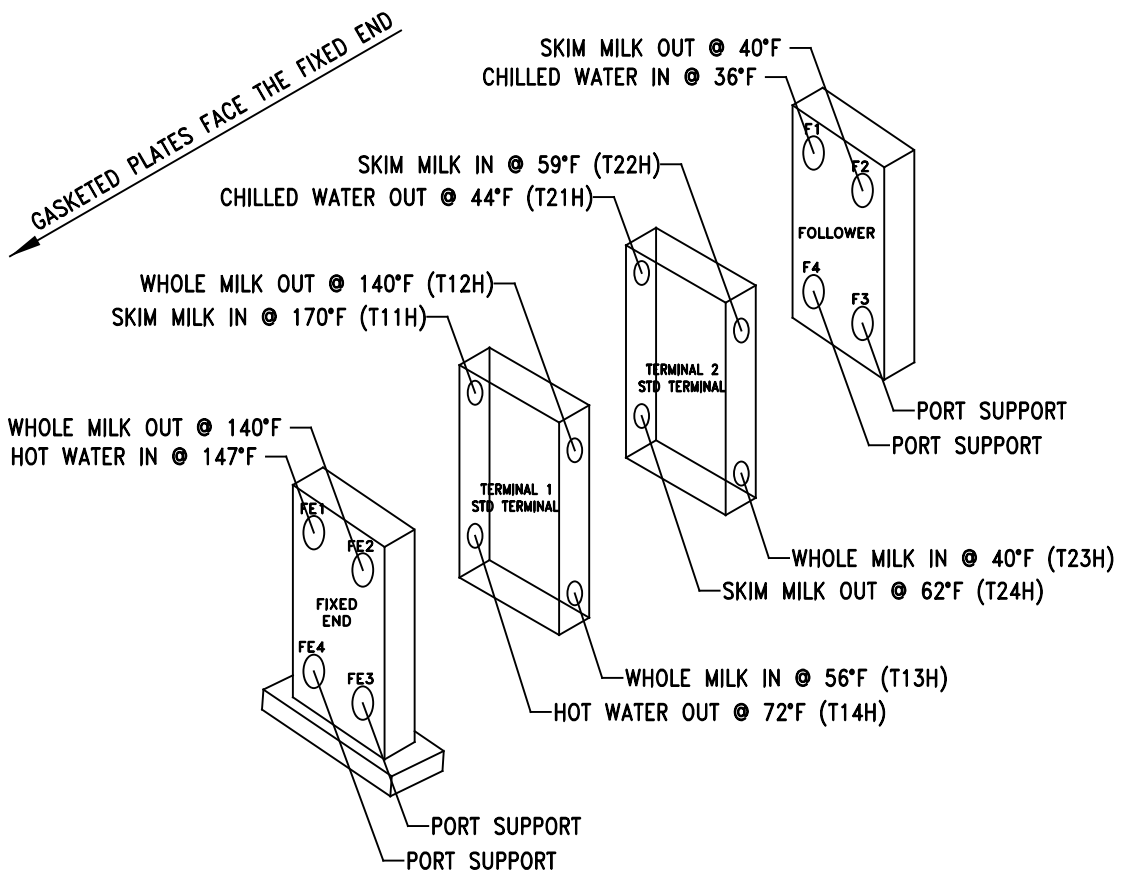


MODEL: AGC PR031-H-E1, SIZE 9 PR03 PLATE HEAT EXCHANGER



DESIGNED AND MANUFACTURED ACCORDING TO 3-A SANITARY STANDARD FOR PLATE HEAT EXCHANGERS, NUMBER 11-09

RECOMMENDED CIP FLOW: 93 GAL/MIN	
SECTION	PRES. DROP
HEATER	11 PSI
REGENERATOR-WHOLE	12 PSI
REGENERATOR-SKIM	12 PSI
COOLER	9 PSI

NOTE:
PHE CAN BE EXPANDED BY 89 ADDITIONAL PLATES

CONNECTIONS & BOSSES

FIXED END & FOLLOWER:
3" TRI-CLAMP

TERMINALS:
3" TRI-CLAMP

BOSSES:
SINGLE X - 4
SINGLE V - 4

HOLD UP

HEATER: 46 US GAL
REGENERATOR: 26 US GAL
SKIM COOLER: 22 US GAL

PRO3 B PLATES	
0.7MM 316 SS W/ EPDM	
1204L B- 6	1200RX B- 3
L B- 115	R B- 125
0234L B- 6	0034R B- 6
1034L B- 7	1200R B- 3
1230L B- 5	1034R B- 3
0034L B- 1	1230R B- 2
12d4L B- 2	1204R B- 2
0204L B- 1	0234R B- 1
1200L B- 1	
L B/R B = 1234L B/1234R B 'd' DENOTES 1/8" DRAIN HOLE	
TOTAL = 289 PLATES	

REV.	DATE	DESCRIPTION
------	------	-------------

DUTY			
FLUID	FLOW	TEMP.	PRES. DROP
HEATER			
WHOLE MILK	6600 GAL/HR	56°F-140°F	18 PSI
HOT WATER	120 GAL/MIN	147°F-72°F	18 PSI
REGENERATOR			
WHOLE MILK	6600 GAL/HR	40°F-140°F	20 PSI
SKIM MILK	6000 GAL/HR	170°F-62°F	16 PSI
SKIM COOLER			
SKIM MILK	6000 GAL/HR	59°F-40°F	14 PSI
CHILLED WATER	240 GAL/MIN	36°F-44°F	9 PSI

TIGHTENING INSTRUCTIONS

THIS MODEL HEAT EXCHANGER IS DESIGNED TO OPERATE WITH METAL TO METAL CONTACT BETWEEN PLATES. THIS MACHINE MUST ALWAYS BE TIGHTENED TO A "DEAD HARD" CONDITION BEFORE OPERATION. THE PLATE DIMENSION SHOWN IS NOMINAL ONLY. TOLERANCES IN PLATES CAN VARY ±0.005"/0.13MM PER PLATE. PIPING TO FOLLOWER AND TERMINAL PORTS MUST ALLOW FOR FREE MOVEMENT WHEN FRAME IS OPENED.

**TIGHTEN UNIT TO -- START 53 7/8" --
MINIMUM 52 7/16" -- OVERALL AS MEASURED FROM THE INSIDE OF THE FIXED END TO THE INSIDE OF THE FOLLOWER.**

CAUTION

THIS UNIT MUST BE COOLED BELOW 90°F/32°C AND RELIEVED OF PRESSURE PRIOR TO OPENING.

AGC HEAT TRANSFER

DATE: 05/15/17

ENGINEER: ELDER

CHECKED BY: MEININGER

SERIAL NO.: 2017195

WESTERN FACTORY
9109 SE 64TH AVENUE
PORTLAND, OR 97206
800.715.8820
503.774.7342
FAX 503.774.2550

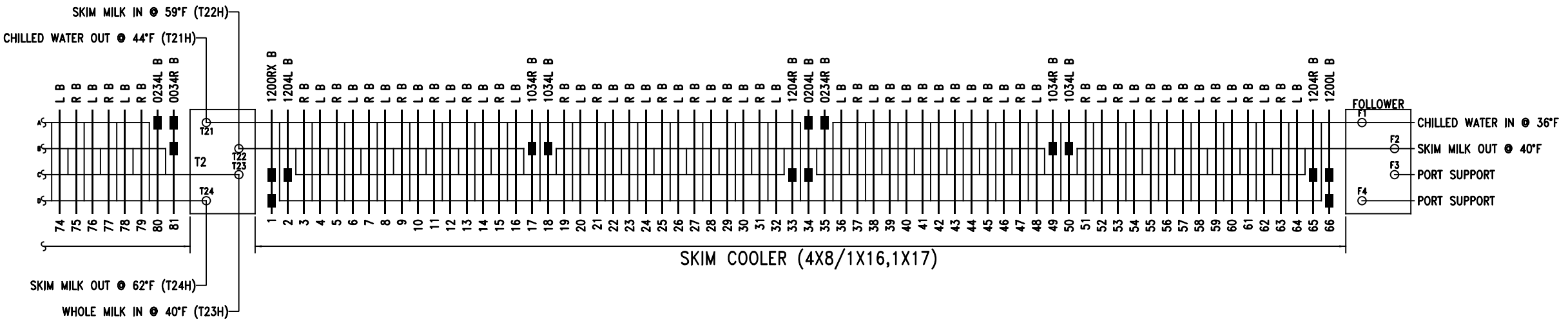
EASTERN FACTORY
10129 PIPER LANE
BRISTOW, VA 20136
800.825.8820
703.257.1660
FAX 703.330.7940

DAIRY FARMERS OF AMERICA
HUGHSON, CA

DRAWING NUMBER: AGC2017195
SHEET 1 of 4

NOTE: THIS DRAWING IS THE CONFIDENTIAL PROPERTY OF AGC HEAT TRANSFER, AND IT MUST NOT BE REPRODUCED IN ANY FORM WITHOUT WRITTEN CONSENT.

MODEL: AGC PR031-H-E1, SIZE 9 PR03 PLATE HEAT EXCHANGER



CAUTION

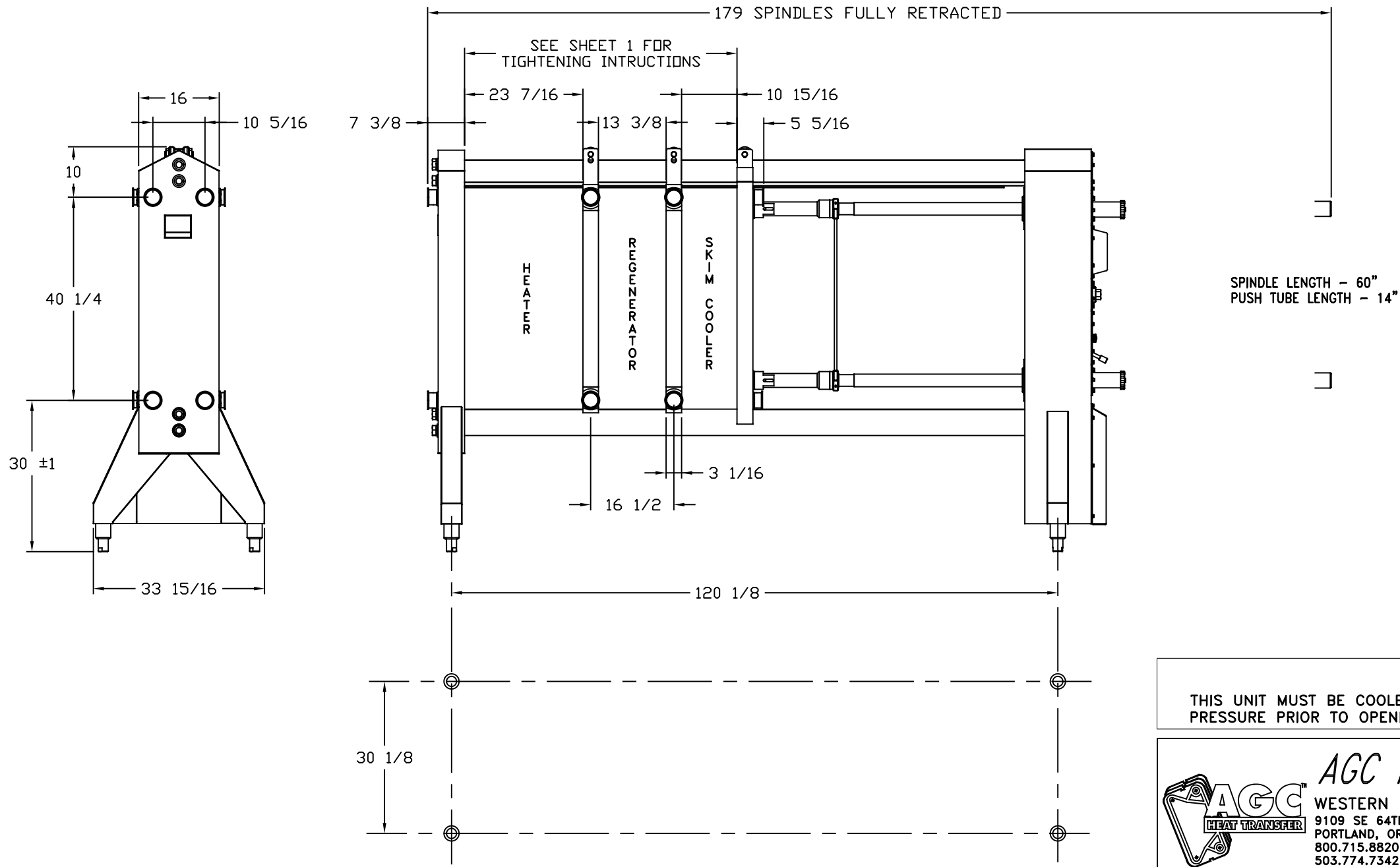
THIS UNIT MUST BE COOLED BELOW 90°F/32°C AND RELIEVED OF PRESSURE PRIOR TO OPENING.

	AGC HEAT TRANSFER		DATE: 05/15/17
	WESTERN FACTORY		ENGINEER: ELDER
	9109 SE 64TH AVENUE PORTLAND, OR 97206 800.715.8820 503.774.7342 FAX 503.774.2550		CHECKED BY: MEININGER
	EASTERN FACTORY 10129 PIPER LANE BRISTOW, VA 20136 800.825.8820 703.257.1660 FAX 703.330.7940		SERIAL NO.: 2017195

DAIRY FARMERS OF AMERICA HUGHSON, CA	DRAWING NUMBER: AGC2017195 SHEET 3 of 4
-----------------------------------------	--------------------------------------------

NOTE: THIS DRAWING IS THE CONFIDENTIAL PROPERTY OF AGC HEAT TRANSFER, AND IT MUST NOT BE REPRODUCED IN ANY FORM WITHOUT WRITTEN CONSENT.

MODEL: AGC PR031-H-E1, SIZE 9 PR03 PLATE HEAT EXCHANGER



CAUTION

THIS UNIT MUST BE COOLED BELOW 90°F/32°C AND RELIEVED OF PRESSURE PRIOR TO OPENING.

	AGC HEAT TRANSFER		DATE: 05/15/17
	WESTERN FACTORY		ENGINEER: ELDER
	9109 SE 64TH AVENUE PORTLAND, OR 97206 800.715.8820 503.774.7342 FAX 503.774.2550		CHECKED BY: MEININGER
	EASTERN FACTORY 10129 PIPER LANE BRISTOW, VA 20136 800.825.8820 703.257.1660 FAX 703.330.7940		SERIAL NO.: 2017195

DAIRY FARMERS OF AMERICA
HUGHSON, CA

DRAWING NUMBER: SHEET 4 of 4
AGC2017195

NOTE: THIS DRAWING IS THE CONFIDENTIAL PROPERTY OF AGC HEAT TRANSFER, AND IT MUST NOT BE REPRODUCED IN ANY FORM WITHOUT WRITTEN CONSENT.