



# PUBLIC AUCTION

## LIVE ON-SITE w/WEBCAST BIDDING



SCAN FOR MORE!!  
USE YOUR SMART PHONE CAMERA

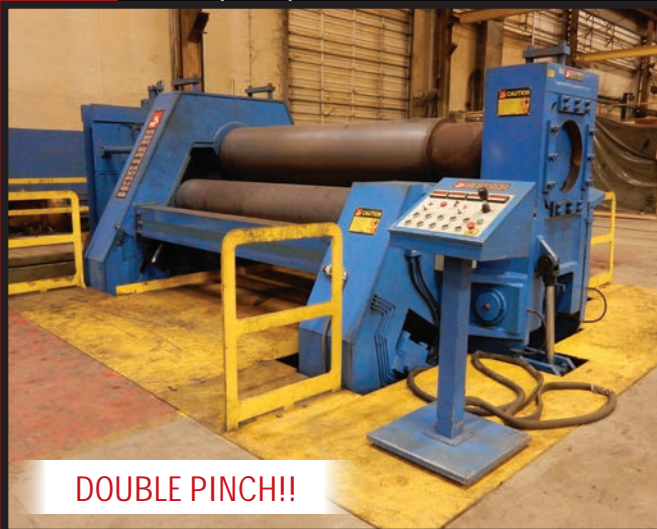
### TUESDAY \* APRIL 30<sup>th</sup> \* 9:00AM

Formerly The Assets Of

## SPX HEAT TRANSFER INC.

2121 North 161st East Avenue Tulsa, OK 74116.

INSPECTION: Monday • April 29<sup>th</sup> • 9:00AM-4:00PM  
Early Inspection Available - Call For Appt.



DOUBLE PINCH!!

2010 BERTSCH 2" X 10' PLATE ROLL



350,000 # TO 900 #

LG. CAP. POSITIONERS!



UP TO 16' X 16'!

PRESTON EASTIN MANIPULATORS



SIDE SHIFTER!

YALE 36,000 # CAP!!

**DUCKWALL**  
**& COMPANY, INC.**  
AUCTIONEERS • APPRAISERS  
PRINCIPAL AUCTIONEER: DANIEL R DUCKWALL

918.836.3611 OFFICE  
918.838.1004 FAX  
duckwallauctions.com  
P.O. Box 580187 • Tulsa OK 74158

In conjunction with...  
**REICH BROTHERS**  
15 Reservoir Rd. White Plains, NY 10603  
www.reichbros.com





VIDEO  
ON  
WEBSITE!!

2010 2" X 10' DOUBLE INITIAL PINCH BERTSCH



\$810,000 NEW!!



PIT ALREADY CLEANED OUT!!

**PLATE ROLLS:** 2010 BERTSCH 2" X 10' CAP., M# 24, S/N M-11069, DOUBLE INITIAL PINCH, HYD. DROP END, REMOTE CONSOLE, 60 HP HPU, PIT-MTD. \* **HASSLEHOLMS** ½" X 4' INITIAL PINCH ROLL, M# PA-185, S/N 853743, POWER DROP END \* **BIRMINGHAM** M# X-5016E, INITIAL PINCH, 16GA. X 50" CAP, ELECTRIC

**WELD MANIPULATOR SYSTEMS:**

**2010 PRESTON EASTIN MA1414HD**, S/N MA1414HD-27, 14' X 14', W/DUAL LINCOLN POWER WAVE AC/DC 1000SD POWER SUPPLIES, S/N U1100604683 & U110604684, S.S. COVERS, DUAL LINCOLN MAXsa-10 SUB ARC FEEDERS, 14'ELEVATED PLATFORM, GARDNER DENVER 482-FLUX FLUX SYSTEM \* **PRESTON EASTIN MA1212HD**, 1996, 12' X 12', W/ LINCOLN IDEALARC DC-1000 \* & DC-600 POWER SUPPLIES, LINCOLN NA-3N SUB-ARC FEEDER, GARDNER DENVER/INVINCIBLE M# 300 FLUX SYSTEM, 112" POWERED TANK ROLL, 13' WORK PLATFORM \* **PRESTON EASTIN MA1414HD**, 16' X 16', W/LINCOLN IDEALARC DC-1000 POWER SUPPLY, NA-3N & NA-4 FEEDERS \* **CUSTOM BUILT 14'**

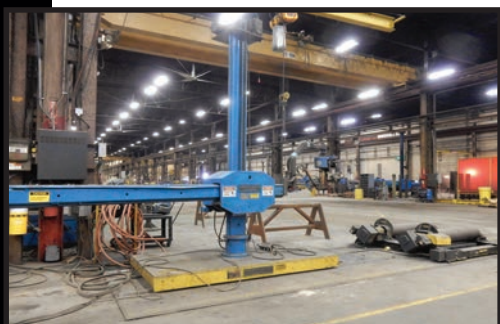
REACH SEAM WELDER W/LINCOLN IDEALARC DC-1000 POWER SUPPLY, NA-3N SUB ARC FEEDER, REMOTE PENDANT, V.S. DRIVE \* **CUSTOM BUILT CART-MTD.** 6' X 8' MANIP. W/DUAL LINCOLN AC/DC 1000SD POWER WAVES, DUAL LINCOLN MAXsa-10 FEEDERS, GARDNER DENVER 482FLUX SYSTEM \* **PRESTON EASTIN 12' X 12' W/LINCOLN IDEALARC DC-1000** POWER SUPPLY, NA-3N FEEDER, GARDNER DENVER 482FLUX SYSTEM \* **8' X 10' W/LINCOLN IDEALARC DC-1000, NA-3N FEEDER** \* **PRESTON EASTIN 8' X 12' W/LINCOLN IDEALARC DC-1000, NA-3N FEEDER, GARDNER DENVER FLUX SYSTEM** \* **PRESTON EASTIN M# MA66LD, 6' X 6', W/LINCOLN IDEALARC DC-600 POWER SUPPLY, LN-7 FEEDER, ROLLING CART \***



NEW AS 2010!



SOLD W/POWER SUPPLIES!



10+ SETS TO CHOOSE FROM







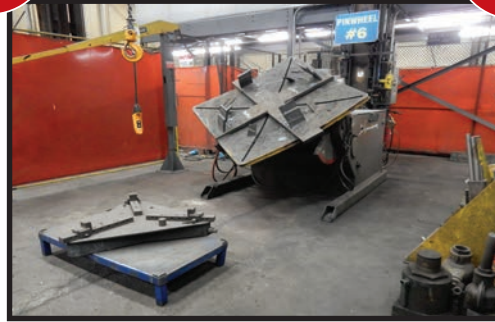
UP TO 135,000# CAP.!!!

VIDEO  
ON  
WEBSITE!!



13 UNITS!!

VIDEO  
ON  
WEBSITE!!



**PRESTON EASTIN** 12' X 12' MANIP. W/ LINCOLN IDEALARC DC-1000 POWER SUPPLY, NA-3N FEEDER, INVINCIBLE FLUX SYSTEM \* **(2) CUSTOM BUILT** WALL/FLOOR MTD. 12' SEAM WELDERS W/LINCOLN IDEALARC DC-1500 POWER SUPPLIES, NA-3N FEEDERS, FLUX SYSTEMS \* **CUSTOM BUILT** ID SUB ARC PIPE WELDER, 16' REACH, W/ LINCOLN DC-600 POWER SUPPLY, LN-9 FEEDER



2" CLAD OVERLAY!!

**WELD POSITIONERS:** **ARONSON** M# G3500, S/N 677, 350,000 LB. CAP. W/10' X 10' TABLE \* **ARONSON** M# G850, S/N 8512, 85,000 LB. CAP. W/8' X 8' TABLE \* **RANSOME** M# 500-P, S/N

660578, 50,000 LB. CAP., W/8' DIA. TABLE \* **RANSOME** M# 500P-A, S/N 2529964, 50,000 LB. CAP. W/7' DIA. TABLE \* **RANSOME** M# 300P, S/N 238133, 30,000 LB. CAP., W/6' DIA. TABLE \* **RANSOME** M# 240P, S/N 289509, 24,000 LB. CAP. W/60" DIA. TABLE \* **RANSOME** M# 240P, S/N 2810368, 24,000LB CAP., 60" DIA. TABLE W/ATTACHED WELD PLATFORM \* **PRESTON EASTIN** M# PA 100HD12, S/N P0100HD-44, 10,000 LB. CAP. W/ 53" X 53" TABLE \* **PANDJIRIS** M# B 3-JAW GRIPPER CHUCK \* **WORTHINGTON** M# 240P, S/N 57993, 24,000 LB. CAP., W/36" DIA. TABLE \*

**WELD OVERLAY MACHINE:** CLAD OVERLAY WELDING SYSTEM, 6' DIA. ROTARY TABLE, 10' X 8' GANTRY, .5MM X 60MM STRIP ELECTRODE, APPROX. 6' ELEVATED RAIL TRAVEL, DUAL LINCOLN DC-1000 POWER SUPPLIES, NA-3N FEEDER W/WWFT-40 72" DIA. ROTARY TABLE



2 SETS! - 30' & 40'!!



25+ SETS UP TO 100 TON!



**BidSpotter.com**

Online Bidders  
Register With Bidspotter.com  
Prior To Auction  
18% Buyers Premium Will Apply  
See [duckwallauctions.com](http://duckwallauctions.com) For More Details





CIRCLE BURNERS & SUB ARCS!!



100+ MIGS, TIGS, SUB ARCS!!



**PRESTON EASTIN** M# PA60HD6, S/N PA60HD14, 6,000 LB. CAP., 48" DIA. TABLE W/PANDJIRIS 3-JAW GRIPPER CHUCK \* (2) **PROFAX** M# WP-500, 900 LB. CAP., 20" DIA. TABLE & 3-JAW GRIPPER \* **PROFAX** M# WP-2000-4, 2,000LB. CAP., 36" DIA. TABLE W/3-JAW GRIPPER

**TANK TURNING ROLLS:** APPROX. 30 SETS **PRESTON EASTIN, UNIQUE, WEBB**, UP TO 100 TON CAP.,

**FIT-UP ROLLS:** **PRESTON EASTIN**, M# FUDSA-50, S/N

FUDSA-50-9, 1997, 50-TON CAP., 40', 19.5" DIA. STEEL ROLLERS \* **PRESTON EASTIN**, M# FUDSA-25, S/N 25-10, 1997, 25-TON CAP., 30', 19.5" DIA. STEEL ROLLERS

**CUTTING SYSTEMS:** **PRESTON EASTIN** M# MA88MD 8' X 8' MANIPULATOR, W/CIRCLE WELDING INNOVATIONS M# RB-3550 CIRCLE BURNER & LJ WELDING M# EBR20-1000 TURNING ROLL \* (2) **CIRCLE WELDING INNOVATIONS** CIRCLE SUB-ARC WELDERS, M# RW-2000Y \* **CYPRESS** 8' X 12' CIRCLE BURNER \* CUSTOM BUILT 46" DIA. CIRCLE CUTTING STATION \* **BUG-O** PORTABLE CIRCLE BURNER \* **CIRCLE WELDING INNOVATIONS** MAGNETIC BASE 48" CIRCLE BURNER \* TRACK TORCHES \* ETC!



**WELDERS:** (100+) WELDERS INCLUDING: PIPEWORX 400 WELD SYSTEM \* (13) DIMENSION NT 450 \* (6) DIMENSION 652 \* R3S-800 \* AC1200 IDEALARC \* IDEALARC DC-1500 \* MILLER 1500P \* (2) DIMENSION 452 \* DIMENSION 302 \* (3) XMT 456 CC/CV \* (4) IDEALARC DC-600 W/BERNARD WELD BOOM \* DIMENSION 300 \* (11) SYNCROWAVE 350LX \* IDEALARC DC-600 \* PRO-WELD M# ARC 1850 STUD WELDER \* (3) DELTAWELD 651 W/BERNARD WELD BOOM \* IDEALARC TIG-300/300 \* MILLER 750 AMP LOAD BANK \* (4) MILLER AXCESS 450

**AIR ARC & TUBE EXPANDERS:** **ARCAIRE** M# 72-008-021 CART-MTD. N7500 GOUGING SYSTEM \* **MILLER** DIMENSION 1000 W/AUTOMATED MILLER GOUGING SYSTEM \* (2) **AIRETOOL** CART-MTD. PNEUMATIC TUBE EXPANDERS, M# DAS-II-DOM



WELD ACCESSORIES & SUPPLIES!!







**ARCAIRE GOUGING SYSTEM**



**TUBE BORE WELDER**



**AIRETOOL TUBE EXPANDERS**



**HEM VERT. BANDSAW**



**CINCINNATI 5/8" X 8' SHEAR**



**SUMMIT RADIAL ARM DRILLS**

**PLASMA CUTTERS:** THERMAL DYNAMICS POWERMAX 1650 \* (2) **HYPER THERM** POWERMAX 105

**CRANE & FORKLIFT ACCESSORIES:** AMERACRANE 14,000# X 22' SPREADER BEAM \* 10,000LB. X 30' \* 20,000# X 32' \* (2) 75-TON X 22' \* 6,000# X 30' \* 9,000# X 8' \* VERY LG. QTY. PLATE LIFTING CLAMPS UP TO 6" CAP. \* LIFTING MAGNETS \* (2) FORKLIFT BOOM EXTENSIONS \* MORSE 2500# CAP. DRUM LIFTER

**PLATE SHEAR:** CINCINNATI M# 4308-R 5/8" X 8' CAP. \* HEM V125M VERT. BANDSAW

**DRILL PRESSES, MILLS, GRINDERS:** (2) **SUMMIT** RADIAL ARM DRILLS, 18" COLUMN X 6' ARM, T-SLOT

BASE \* **GROMAX** VERT. MILL, 3HP, VS HEAD, 10" X 44" TABLE \* **HAMMOND** WD-10-C DUAL END PEDESTAL GRINDER \*

**BLAST EQUIPMENT:** EMPIRE BLAST SYSTEM W/DCM-200HV BAG DUST COLLECTOR, 10 HP CENTRIFUGAL BLOWER, BLASTTANK, OUTDOOR-MOUNTED BAGHOUSE DUST COLLECTION SYSTEM

**MISC:** REBUILT TRILLIUM/STOKES MODEL# 421-11 15HP ROTORY PISTON PUMP \* LG. QTY. HARRINGTON 1-2 TON ELECTRIC CHAIN HOISTS \* TRACK TORCHES \* WELD CURTAINS \* SHOP FANS \* FLAMMABLES CABINETS \* STEP & EXTENSION LADDERS \* WAREHOUSE LADDERS \* QC/MAINTENANCE CARTS \* TOOL LOCKERS \* TORCH CARTS \* HAND TRUCKS \* STEEL TABLES \* HEATING TORCHES \* NATURAL GAS SHOP HEATERS \* HEAVY DUTY EQUIPMENT JACKS & SUPPORTS \* POWERTEAM PQ120 PORTABLE HEAVY DUTY HYD. JACK SYSTEM \* RIDGID 535 PIPE THREADERS \* LG. QTY HEAVY DUTY C-CLAMPS \* AIR GRINDERS \* PHOENIX 36" ROD OVENS \* KEEN M# KHT-500 ROD OVEN \* WELDING & TORCH CONSUMABLES \* WELDING WIRE & ROD \* WELDING FLUX \* HYDRO TEST SYSTEM W/FWI M# P-313 TRIPLEX PLUNGER PUMP, 30 HP \* (2) CUSTOM BUILT VESSEL DRYERS, APPROX. 60' LONG, MULTIPLE HEAT PORTING \* (28) 7' X 2' X 40' STACKABLE TUBING RACKS \* BAR STORAGE RACKS \* (36) 2' X 32" X 16' TUBING RACKS \* (4) 10' DIA. X 12' TALL HALF-ROUND STEEL WORK HUTS W/TRANSFORMERS



**GROMAX VERT. MILL**



1 OF 2!!

**GENIE MANLIFTS**



**BLAST UNIT W/BAGHOUSE DUST COLLECTOR**







**YALE 36,000# LIFT**



**YALE 10,000# LIFT**



**NISSAN 5,000# LIFT**



**TRACKMOBILE RAIL CAR MOVER**



**YARD TRUCKS & STRETCH TRAILERS**



**FORKLIFTS & BOOM LIFTS:** **YALE GP360** (GDP360ECECCV162) 34,000# FORKLIFT, S/N E877E01619K, 3,350 HOURS, ENCLOSED CAB, 2-SECTION MAST, FORK & SIDESHIFT, 8' FORKS, DUAL A/T TIRES, DIESEL \* **YALE** M# GLP120VXNGGV111, S/N H813V0201K, 10,300LB. CAP., 2-SECTION MAST, SIDE & FORK SHIFT, 6' FORKS, R/T TIRES, PROPANE \* **(2) NISSAN** 60 FORKLIFT, M# MUG1F2A30LV, 5,000# CAP., 3-SECTION LO-PRO MAST, SIDE SHIFT, 48"-72" FORKS, A/T TIRES, PROPANE \* **2001 GENIE** BOOM LIFT, M# X4525, 45' PLATFORM HEIGHT, ELECTRIC, PNEUMATIC TIRE \* **GENIE** BOOM LIFT, M# Z-60/34, 4X4, PROPANE \*

**ROLLING STOCK:** (4) FONTAINE & AMC 40'-65' FLATBED STRETCH TRAILERS W/SLIDING AXLES \*

CAPACITY VISTA CAB SINGLE AXLE YARD TRACTOR \* OTTAWA YT-30 SINGLE AXLE YARD TRACTOR \* TRACKMOBILE RAIL CAR MOVER (NON WORKING) \* EZ-GO UTILITY TRUCK, M# TERRAIN 250, SINGLE BENCH SEAT, POLY DUMP BED, GAS \*

**OFFICE:** (24) FOLDING CAFETERIA TABLES \* WOOD & FORMICA DESKS \* TRAINING ROOM TABLES \* FILE CABINETS \* CORNELIUS ICE MAKER/DISPENSER \* REACH-IN COOLER \* SOFA \* CHAIRS \* ETC.



**FOR COMPLETE TERMS, VIDEOS AND CATALOG OF PHOTOS VISIT [DUCKWALLAUCTIONS.COM](http://DUCKWALLAUCTIONS.COM) OR SCAN THE QR CODE.**



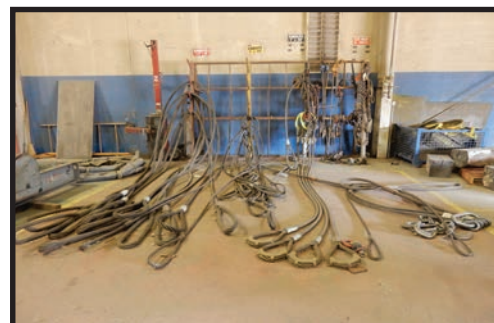
**PLATE CLAMPS UP TO 6"!**



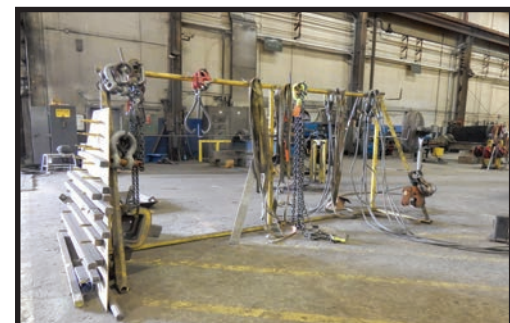
**WET BLAST SYSTEM**



**LG. CAP. SPREADER BEAMS**



**HUGE SELECTION OF SLINGS & CHAINS!**







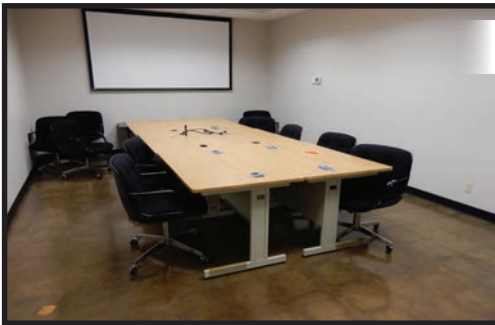
**STRETCH TRAILERS**



**LADDERS, STEPS, SUPPORT**



Visit [Duckwall.com](http://Duckwall.com)  
For Complete Terms.  
Complete Catalog And  
Videos Available Online.



**OFFICE FURNITURE - SELLS EARLY**



**ATTENTION RIGGERS & BUYERS!!**

All Riggers Removing Equipment from the property must have a **minimum of \$5M insurance certificate**. All certificates must be made available to the auction company before any removal can take place. It is the responsibility of the Rigger/Buyer to properly disconnect equipment and/or clean up any spills that may have occurred during removal.

**DIRECTIONS: From Tulsa Int'l Airport:** Leave airport on Hwy 11 Eastbound. Proceed 1.5 miles and merge onto Interstate I-244. Continue eastbound 3.5 miles and merge onto Interstate I-44. Continue eastbound 1.5 miles to exit 238 (161st Street). Go north to QuickTrip, jog back west in front of QuickTrip to 161st St. Go north 1.5 miles to SPX on the right. Signs will be posted.

**REMOVAL: REMOVAL IS AT BUYER'S RISK & EXPENSE. ITEMS MUST BE REMOVED BY FRIDAY MAY 14TH @ 4:00PM!!**

**TERMS:** 15% buyer's premium (ONSITE AUCTION) - 18% buyers premium (ONLINE OR PROXY BIDS). FULL PAYMENT MUST BE MADE DAY OF AUCTION. We accept cash, cashier's check, check with bank letter of guarantee, or wire transfer. NO credit cards will be accepted! Sales tax will be charged without tax exemption in hand on sale day!

**SEE COMPLETE TERMS AT [DUCKWALLAUCTIONS.COM](http://DUCKWALLAUCTIONS.COM)**



**UNABLE TO ATTEND?**  
**BID ONLINE IN REAL TIME AT [BIDSPOTTER.COM](http://BIDSPOTTER.COM)**  
TO PARTICIPATE YOU MUST REGISTER!! NO EXCEPTIONS!!

1. REGISTER AT [BIDSPOTTER.COM](http://BIDSPOTTER.COM)
2. SEND WIRE TRANSFER OR OVERNIGHT A CASHIER'S CHECK IN THE AMOUNT OF \$3,000 TO:

**DUCKWALL AUCTIONS**  
6103 E. ADMIRAL BLVD  
TULSA, OK 74115

WIRE TRANSFER INSTRUCTIONS AT [DUCKWALLAUCTIONS.COM](http://DUCKWALLAUCTIONS.COM)

**YOU MUST BE REGISTERED AND YOUR DEPOSIT RECEIVED AT LEAST 24 HRS PRIOR TO THE START OF THE AUCTION OR YOU WILL BE DISQUALIFIED FROM BIDDING.**

IF YOU NEED ASSISTANCE CALL 918.836.3611  
BIDS SUBJECT TO 18% BUYERS PREMIUM

**DON'T MISS OUT!!**  
**GET ON OUR MAILING LIST!!**

LOOK FOR THE MAIL BOX ON  
[DUCKWALLAUCTIONS.COM](http://DUCKWALLAUCTIONS.COM)  
TO SIGN UP



## **HUGE HEAT EXCHANGE FAB SHOP**

**PLATE ROLLS • WELD MANIPULATOR  
SYSTEMS • WELD POSITIONERS •  
WELD OVERLAY MACHINE • TANK  
TURNING ROLLS • FIT-UP ROLLS •  
CUTTING SYSTEMS • WELDERS • AIR  
ARC & TUBE EXPANDERS • PLASMA  
CUTTERS • PLATE SHEAR • DRILL  
PRESSES • MILLS • GRINDERS • SHOT  
BLAST • ROLLING STOCK • FORKLIFTS  
• BOOM LIFTS • AND MUCH MORE!!**

For complete catalog and photos of all items, visit our website [duckwallauctions.com](http://duckwallauctions.com)

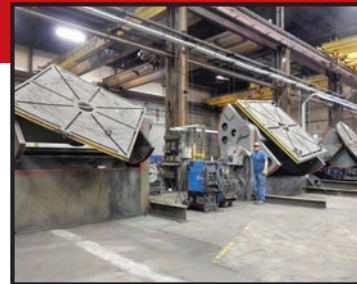
## **PUBLIC AUCTION** LIVE ON-SITE w/WEBCAST BIDDING

**TUESDAY \* APRIL 30<sup>th</sup> \* 10:00AM**

Formerly The Assets Of

**SPX HEAT TRANSFER INC**

2121 N. 161st St., Tulsa, OK 74116



**PLATE ROLLS • WELD MANIPULATOR SYSTEMS • WELD POSITIONERS • WELD OVERLAY MACHINE •  
TANK TURNING ROLLS • FIT-UP ROLLS • CUTTING SYSTEMS • WELDERS • AIR ARC & TUBE EXPANDERS •  
PLASMA CUTTERS • PLATE SHEAR • DRILL PRESSES • MILLS • GRINDERS • SHOT BLAST • ROLLING STOCK •  
FORKLIFTS • BOOM LIFTS • AND MUCH MORE!!**



## **UPCOMING AUCTIONS**

**MAY 9TH \* 10:00 AM \* BROOKSIDE MOTORCYCLES \* TULSA**

**(24) HARLEYS, TRIUMPHS, HONDAS, GUZZIS, ETC. SOME AS LATE AS 2016!!!**

**PLUS PARTS BIKES & REBUILDERS!!!**

**ALSO, PARTS, CLOTHING, GEAR, NISSAN FORKLIFT,**

**1994 MERCEDES & 2000 JEEP CHEROKEE**

**(SEE VIDEOS OF RUNNING BIKES @ [duckwallauctions.com](http://duckwallauctions.com)!!)**