

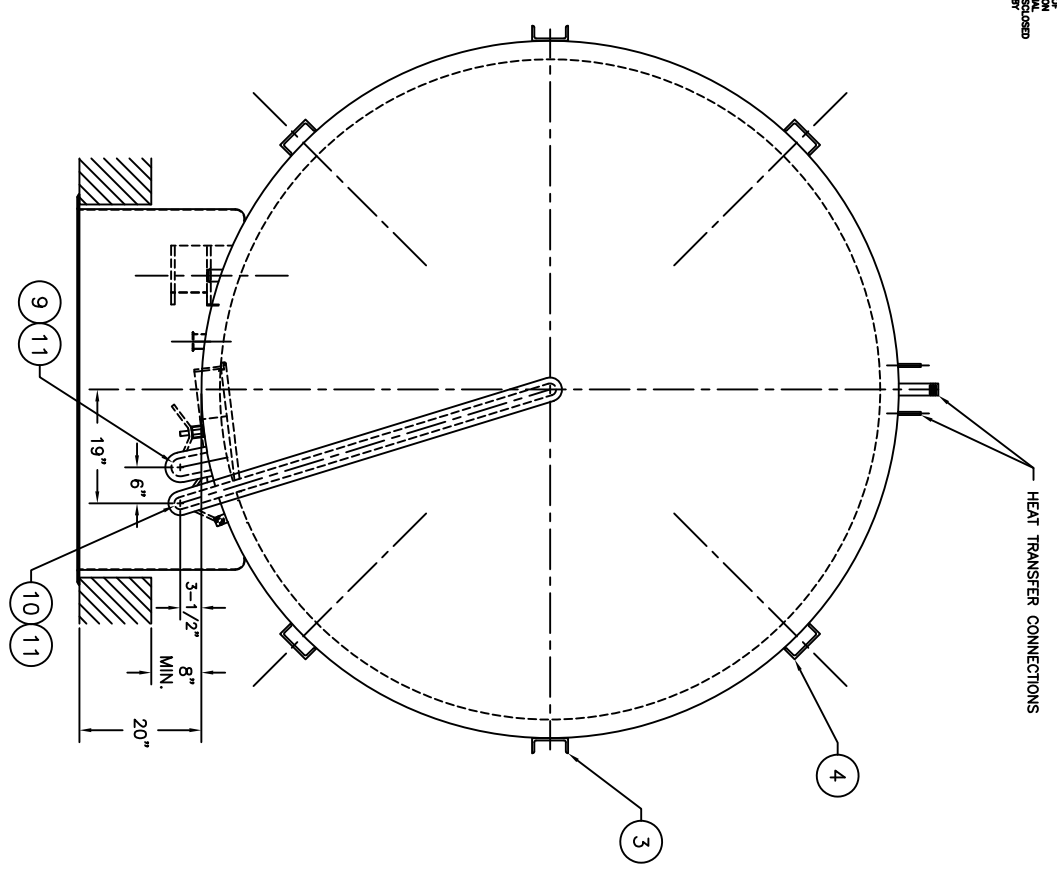
NOTE:

- 1) FOR SUGGESTED METHOD OF HOLDDOWN SEE DRAWING 8008587
- 2) FOR SPRAY UNIT & CIP PIPING DETAILS SEE DRAWING 8008077
- 3) FOR CIP CLEANING, THE MANHOLE DOOR MUST BE OPEN. USE CIP VENT & REVENT ADAPTER WITH LOUVERED DOOR IN PLACE.

(17) (18)

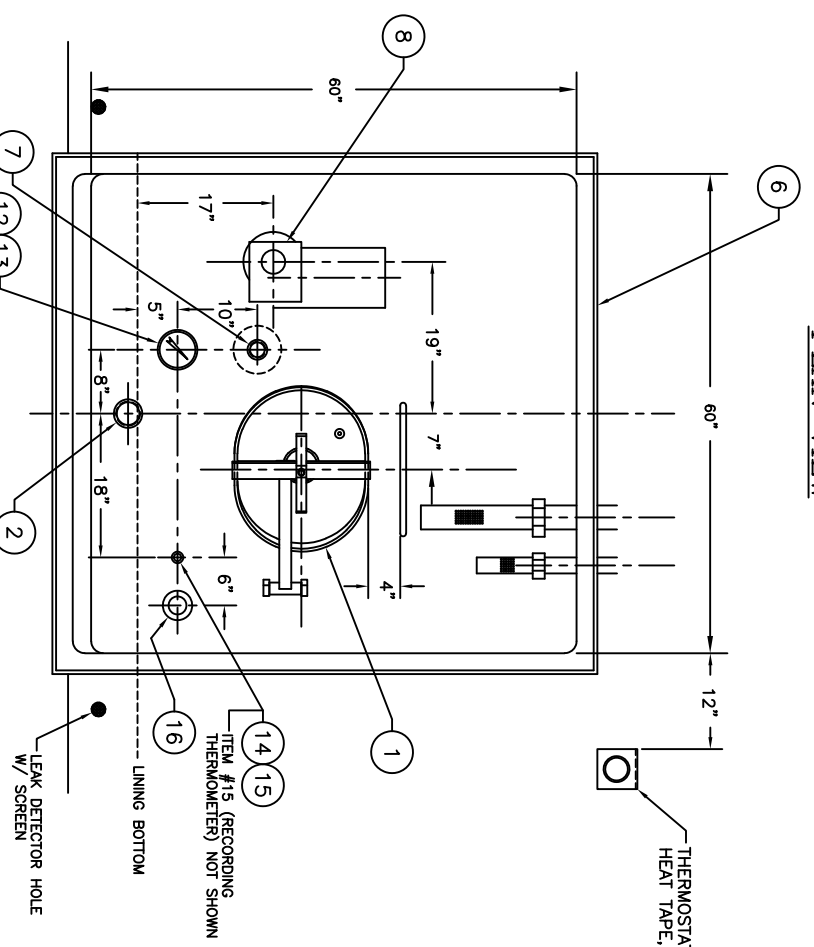
SPECIFICATIONS FOR: (1)

- DIMENSIONS**
20,000 GALLON VERTICAL INSULATED 'SW' SILO STORAGE TANK
FOR RAW MILK (RATED CAPACITY + 2% TO THE OVERFLOW)
- LINING**
136" ID x 329" STRAIGHT SIDE OF THE LINING x APPROX. 368" OVERALL HEIGHT TO THE TOP OF THE TANK
LINING MATERIAL TYPE 304 SS, #4 FINISH INSIDE
LINING SHELL - 12 GA.
ASME TOP HEAD - 12 GA.
FLAT PITCH BOTTOM - 10 GA., 3/4" PER FOOT PITCH
- FINISH**
INTERNAL WELDS (INCLUDING ALCOVE) GROUND AND POLISHED - 150 GRIT MIN.
EXTERNAL MILD STEEL WELDS WIRE BRUSHED
- INSULATION**
NOTE: - SCOTCH BRITE WELD FINISH OUTSIDE ON MANHOLE HARDWARE.
3" POLYSTYRENE INSULATION ON THE SIDEWALL
3" FIBERGLAS INSULATION ON THE TOP HEAD
FOAM INSULATION ON THE BOTTOM HEAD
- HEAT TRANSFER SURFACE**
NOTE: - CHANNEL WALL SURFACE IS PARTIALLY PURGED OF WATER, OIL AND DEBRIS USING C-B FACTORY AIR PRESSURE AND CAPED PRIOR TO SHIPPING.
- OUTER JACKET**
SIDEWALL TRIM - 12 GA. MILD STEEL
DISHED TOP HEAD - 10 GA. MILD STEEL
MILD STEEL OUTER JACKET PRIME COATED



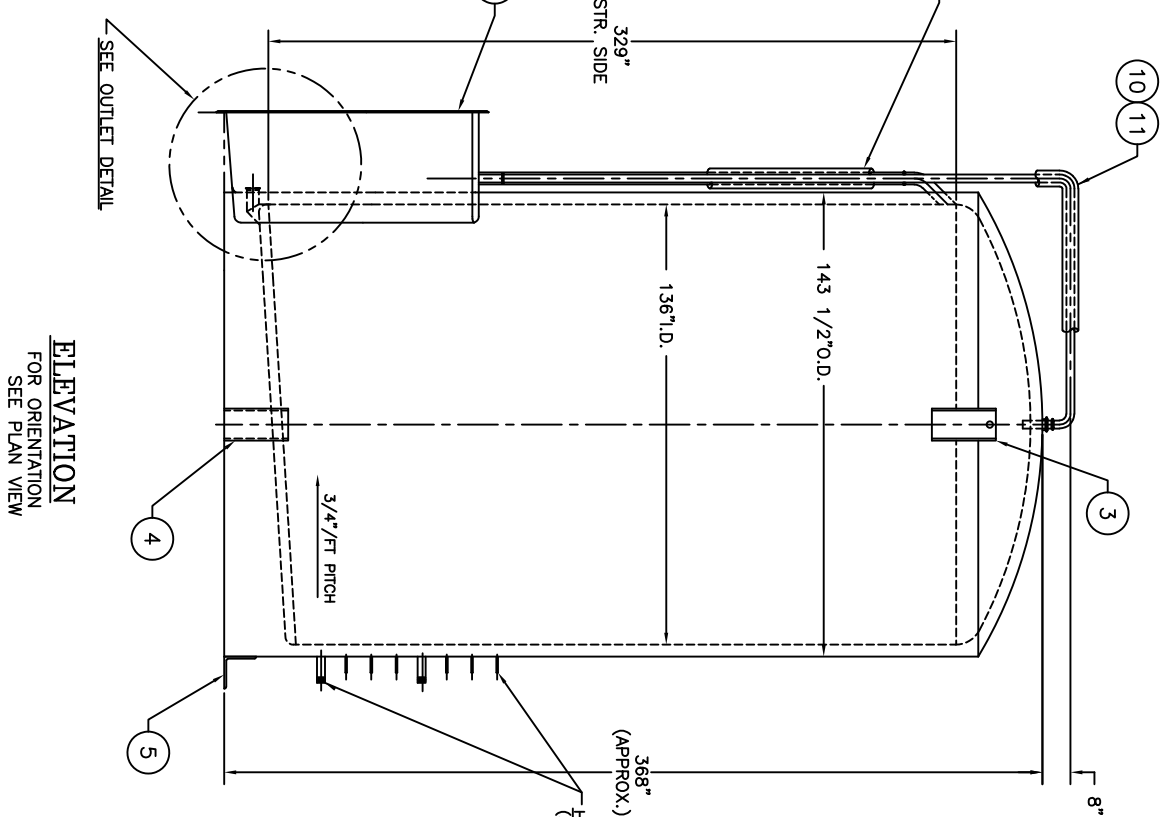
PLAN VIEW

THERMOSTAT FOR HEAT TAPE, ITEM #11



ALCOVE DETAIL

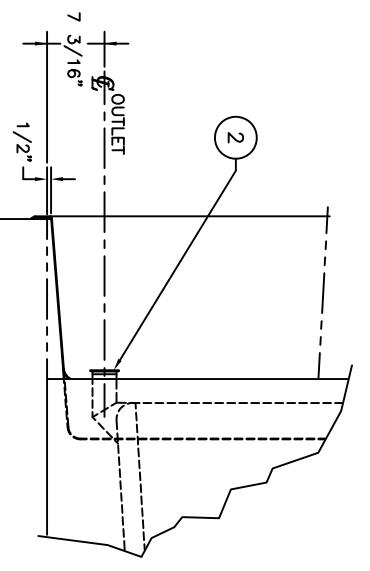
SCALE: 1" = 12"



ELEVATION
FOR ORIENTATION
SEE PLAN VIEW

HEAT TRANSFER SURFACE (2) SECTIONS OF 90 sq. ft. EACH SECTION. (6) SOLID INLETS, 1/8" IPS EACH SECTION. (1) SUCTION OUTLET, 1-1/2" IPS EACH SECTION

ITEM	QTY	DESCRIPTION
1	1	MANHOLE: 16" x 20" IN THE SIDEWALL WITH SAMPLE VALVE T304 SS HAND GRIP OVER THE MANHOLE DOOR
2	1	OUTLET: 3" 'S' CONN. HORIZONTAL CONE - (LESS VALVE)
3	4	STD. 7-3/16" OUTLET HEIGHT FROM THE BASE TO THE CENTRELINE OF THE OUTLET FERRULE
4	4	TOP LIFTING LUGS: MILD STEEL
5	7	BOTTOM LIFTING LUGS: MILD STEEL
6	1	ALCOVE: 60" x 60" x 20" DEEP T304 SS, #4 FINISH INSIDE, FACTORY WELDED THEN CUT OFF APPROX. 8" FROM THE TANK AND SHIPPED LOOSE FOR FIELD INSTALLATION BY OTHERS
7	1	INLET: 3" 'S' CONN. CONE IN THE ALCOVE AREA - (LESS VALVE)
8	1	AGITATOR: HORIZONTAL, 'C' STYLE 2 HP SINGLE SPEED RELIANCE MOTOR, OPER. @ 278 RPM 230/460/60/3 (LESS SWITCH)
9	1	OVERFLOW/VENT LINE: 3" O.D. EXTENDING FROM THE UPPER SIDEWALL DOWN INTO THE ALCOVE AREA WITH REMOVABLE SCREEN
10	1	CIP SPRAY UNIT: (SD-6) REMOVABLE IN THE TOP HEAD WITH 2" O.D. CIP LINE EXTENDING DOWN INTO THE ALCOVE AREA WITH REMOVABLE SCREEN ON THE CIP AND VENT LINES
11	1	HEAT TAPE AND INSULATION: 240 VOLT ELECTRICAL WITH (1) THERMOSTAT ON THE CIP AND VENT LINES
12	1	PROJECTILE WELL: FOR DIAL THERMOMETER
13	1	THERMOMETER: 5" DIA (25 - 125 DEG. F RANGE)
14	1	PROJECTILE WELL: FOR RECORDER (ANDERSON EQUIVALENT #41247) - (TAYLOR EQUIVALENT #26P397)
15	1	RECORDING THERMOMETER: TAYLOR WITH ELECTRIC CLOCK
16	1	KING GAUGE (SHELL ONLY): SUPPLIED AND INSTALLED BY C-B (LESS CAPSULE NUT AND TRANSMITTER)
17	1	CIP LOUVERED MANHOLE DOOR: - T304 SS NOTE: (1) ONLY REQUIRED FOR USE WITH E-272 AND E-273-88
18	1	CIP VENT AND REVENT ADAPTER: WITH INTERFERENCE BAR - T304 SS NOTE: (1) ONLY REQUIRED FOR USE WITH E-272 AND E-273-88



OUTLET DETAIL

NOTE: CAD DRAWING DO NOT CHANGE MANUALLY

NO.	DATE	CHANGE NO.	BY	REASON
<p>CHERRY-BURRELL INTERNATIONAL 115 VAN GUSLING AVE. SCHENECTADY, NY 12305</p>				
<p>INVOICE NO. URS3663</p>		<p>QUOTE NO. 83663 (89)</p>		
<p>SOLD TO: CAPPFIELD DAIRY PRODUCTS, INC. 115 VAN GUSLING AVE. SCHENECTADY, NY 12305</p>		<p>SHIPPED TO: CAPPFIELD DAIRY PRODUCTS, INC. 115 VAN GUSLING AVE. SCHENECTADY, NY 12305</p>		
<p>FINAL ASSEMBLY 'SW' SILO TANK</p>		<p>ASSEMBLY NO. E-272-88</p>		