



Public Auction



Saturday, March 28th 10am

Marvin & Ruth Ellis

10523 290th Weldon, Iowa 50264



Directions- 8 miles East of the Wade corner (Hwy 69 & H12) to 290th Ave South ½ mile on the East side of the road.



This Auction will feature a nice line up of great equipment, purchased new by Marvin and Ruth. Meticulously maintained and for the most part always shedded.



Tractors-Combine-Stock Trailer

2007 JD 7730 MFWD tractor, deluxe cab, green star ready, IVT trans, L.H. reverser, 3 remotes, 1383 hrs, 480-80R 42" rear tires, 380-85R 30" front tires, sells with 12 front wts and (2) 450lbs rear weights; 2000 JD 7510 MFWD tractor, deluxe cab, 20 speed tran., L.H. reverser, 4728 hours, 18.4-38 tires and duals, 14.9 -28 front tires, air seat, sells with 2000 JD 740 self leveling loader with 96" bucket; 1959 A.C. D-17 tractor, narrow front, straight tin; 1981 JD 6620 Combine, Turbo, Hydrostat, 24.5-32 rice tires with 4051 hours, H.D. final drives & rear axle, 643 corn head, with new snapping rolls, JD 216 platform; 7x24 Feather Lite aluminum livestock trailer; 1996 IH 2188 combine, 3800 hrs, 4 whl drive, yield monitor, straw chopper, field tracker, 1020 97 model 30' platform; 2008 2208 8-row 30 corn head, hydro deck plates, will sell separate from combine;

Tillage & Planting Equipment

2007 JD 2210 fieldcult., 26.5' single point depth control, wing stabilizer wheels, perma loc, 12" sweeps, 4 bar tine harrow, adjustable hitch link-nar clevis 2 1/8"; 2008 JD 637 disk with 22" blades, touch set depth control, Hyd wing control, 22.5" 3 bar tine harrow; 12' Gience series III soil saver; 4 row JD rotary hoe 3pt; Hiniker 6-30 cultivator with rolling shields; JD8300 grain drill grass seed 13' double disc openers; 1998 JD 1780 no till planter 6-30 with splitters 11-15" vacuum heavy down spring, 150 monitor has new disc openers never been in the ground; 26' Fuerst harrow on hyd cart; consigned 32' and a 42' Willrich field cultivators;

Hay Equipment

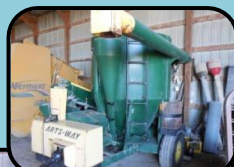
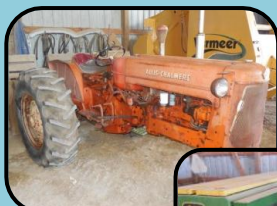
2007 JD 946 mower Impeller conditioner; 2011 Vermeet 605 super M baler with net wrap, oiler, moisture tester, 1000 RPM PTO, bale ramp, only 821 bales; H&S 12 wheel high capacity rake; Goose neck 8 bale hay trailer dual wheels; Super nice hay equipment!

Other Equipment

(2) 2009 Brent 544 green wagons with roll tarps and brakes; 2011 Westfield 100-71' auger swing away hopper; (2) Westfield 8x61' augers; (1) Westfeild 7x31' truck auger with motor; (2) Parker 2500 grain wagons one with brakes; 3150 Better Built manure wagon with knife plow hyd drive; 5-16 JD semi mounted plow; 3pt mounted sprayer with 30' boom with drops; 300 gal spray tank with filed cultivator mounts SCS330 spray control; 2010 H&S spreader, vertical beaters, 425 bushel, hyd push; Arts Way 475 grinder mixer 2.5 ton weight-tronix 1000 scale; Roto grind tub grinder; Rem 2100 grain vac; Danhauzer digger with 9" auger, 20" bit and extension to sell separately; Great Plainses bat wing mower 15'; 14' BWA JD disc;

Miscellaneous Equipment

25 kw pto generator on 2-wheel cart; Century A.C. D.C welder-Porter Cable; Upright air compressor; 80 gal air comp 175 P.S.I 7 ½ hp; ¾" drive socket set; Snap On ratchet & breaker bar; 10 ton Porta power; Victor acetylene torch & cart; Hand power tools; Usual amts hand tools; assorted gates; coral; Powder River tilt calf table; several Stroberg cattle panels; Stroberg portable loading chute; (11) concrete feed bunks; (13) rubber tire silage bunks; hog feeders; 30 gallon push carts; 500 gallon propane tank; several iron piles; pipe threader; (2) 8' hog shelters on skids; (6) Ideal farrowing crates; 16' hog gate; 80 bu. hog feeder; vet supplies to include: pistol grip syringes, needles, calf puller, ob chains, Synovex implant gun; bale feeders; mineral feeders; bale carrier; and other small miscellaneous items!



Auctioneers:

Don Wagner 641-931-6832

Jason Dent 515-231-5176

Art Snider 641-777-6413

Wagner-DentAuctions

www.wagner-dentauctions.com



Terms: Cash, check or credit cards. No items will be removed until settled for. Sellers or auction company are not responsible for accidents, errors in listings or lost items. Announcements made day of sale take precedence over any printed matter. When registering for a buyer number proper I.D. will be required.

Lunch by Denise. Restrooms available on site.